



Model 4262

SPEEDTRAP™ Intake Air Shutoff Valve



FEATURES

- Fast Acting, Solenoid Operation
- Compact Design for Installation Ease
- Anodized Aluminum (Gulfproofed Construction)

APPLICATIONS

Runaway/Overspeed shutdown of small diesel engines powering the following equipment:

- Oilwell Pumpjacks
- Blowers
- Air, Gas & Refrigerant Compressors
- Welders
- Hydrostatic Power Packs
- Pump Packages - Fire Suppression, Fuel, Etc.
- Generator Sets
- Portable Lighting Systems
- Mobile Equipment - Tractors, Trenchers, Backhoes
- Marine Engines

Typical engine installations include Kubota, Perkins, Isuzu, John Deere, etc.

OPERATION (Manual or Automatic)

Model 4262 is manually cocked into the open position prior to starting the engine. To stop the engine in an emergency or in the event of engine runaway (overspeed), Model 4262 can be actuated pneumatically, hydraulically, electrically and a manual option is available. Actuation of the 4262 closes the valve's disk, sealing off intake air to the engine. For automatic operation via sensing engine rpm, use AMOT Model 8210K speed switch in conjunction with an electrically operated version, or 4110 speed valve for hydraulic/pneumatic system.

INSTALLATION

- Turbo Charged Engines - Model 4262 is installed after the engine's intake air filter, on the inlet side of the turbo charger as close as possible to the turbo's inlet.
- Naturally Aspirated Engines - Install Model 4262 as close as possible to the engine's intake air manifold inlet.

Model 4262 can be secured to existing intake piping using rubber sleeves and / or hump hoses with hose clamps. AMOT recommends using a quality, **constant tension** clamp for installation of the valve. Hoses and clamps are available from AMOT.

INSTALLATION ACCESSORIES AVAILABLE FROM AMOT:

- Model 8210K Electronic Overspeed Sensing Switch
- Model 8210K Installation Kit
- Panel / Dash Labels and Momentary Push Buttons
- Rubber Hoses and Constant Tension Hose Clamps

SERVICE AND MAINTENANCE

AMOT recommends frequent testing of Model 4262 to ensure proper functioning. Lubrication of the valve disk shafts (top and bottom) where they protrude through the valve body is the only maintenance required. AMOT recommends a quality, penetrating spray lubricant (i.e., Tri Flow[®], etc.) for valve shaft lubrication.

HOW TO ORDER:

Specify required AMOT Model No. below:

- Model 4262C04AO_____

SPECIFICATIONS

Standard Materials

Valve Body Disk Hard Anodized
 Cast Aluminum
 Fasteners, Torsion Spring . Plated Steel, Stainless Steel
 Safety Control Operator Anodized Aluminum
 Pneumatic Cylinders Aluminum & Stainless Steel
 Brackets Plated Steel

Maximum Intake Air Temperature

Buna N Seals (standard) 200°F (121°C)

Net Weight (including operator)

4.0" Size Valve 4.0 lbs

Safety Control Operator

Adjustable Tripping Pressure 5-40 psi Falling
 (34-275 kPa)
 Maximum Pressure on Diaphragm ... 170 psi (1170 kPa)

Pneumatic Cylinder

Minimum Actuating Pressure 30 psi (207 kPa)
 Maximum Working Pressure 200 psi (1380 kPa)

Electric Solenoid Operators (intermittent duty)

12VDC Type 107 Watts
 24VDC Type 107 Watts
 Maximum Coil Temperature 350°F (175°C)
 Rated for intermittent duty; 1 minute on, 9 minutes off

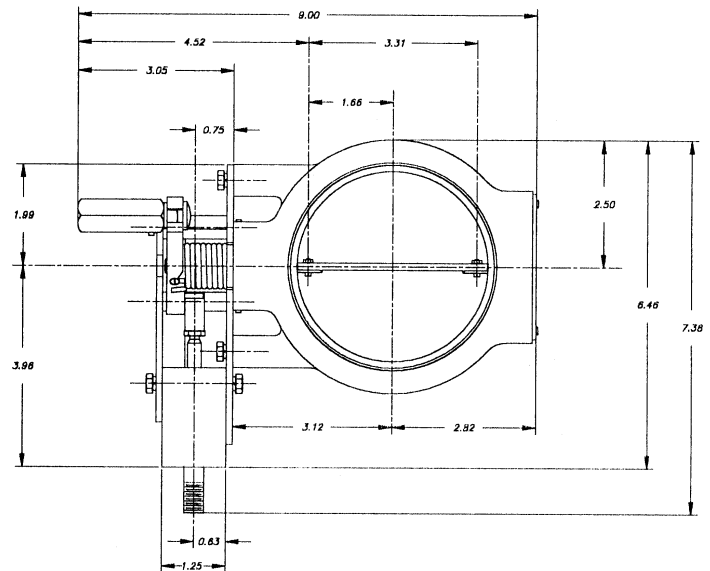
Manual Operator

Mechanical Pull to Release 15 lbs (67N)

CODE	VALVE OPERATOR
21	Pneumatic Cylinder , Pressurize to run, spring return to close, NPT threads.
23	Manual/Pneumatic Cylinder , Manually cocked to run, pressurize or manual trip to shut down, NPT thread.
25	Pneumatic Cylinder , pressurize to close, spring return to open
41	Safety Control , NPT thread.
71 *	Electric Solenoid , 12 VDC, manually cocked to run, energize to shut down.
72 *	Electric Solenoid , 24 VDC manually cocked to run, energize to shut down.

* Contact factory before using in mobile applications.

DIMENSIONS



AMOT USA

8824 Fallbrook Dr
 Houston, TX 77064
 Tel: +1 281 940-1800
 Fax: +1 281 668-8802

AMOT

Western Way
 Bury St. Edmunds IP33 3SZ
 Suffolk England
 Tel: +44 1284 762222
 Fax: +44 1284 760256

AMOT SINGAPORE

10 Eunos Road 8 # 12-06
 Singapore Post Centre
 Singapore 408600
 Tel: +65 6293 4320
 Fax: +65 6293 3307