

HOW TO ORDER

To order, construct the appropriate model number from the Model Code Table, or specify the following information:

1. AMOT Model 4395, type A or B.
2. Lever type: standard or extended, see Table A.
3. Switch contacts, see Table B.
4. Electrical connection and wire length, see Table C.
5. Wire type, see Table D.

MAINTENANCE

Properly installed, Model 4395 trip lever switch requires minimal maintenance. AMOT recommends the switch be periodically tested by manually tripping the lever arm to ensure the switch is functioning properly.

MODEL CODING

| | | | | | | |
|----------------------------------|------------------------|---------------------|---------------------|----------|----------|--|
| 4395A Basic Model Code | A Rev. Level | 1 Table A | 1 Table B | A | 0 | () Special Code Made to Order (MTO) |
|----------------------------------|------------------------|---------------------|---------------------|----------|----------|--|

| Model Type | |
|------------|---------------------------|
| Code | |
| A | General Purpose |
| B | Explosion Proof (Pending) |

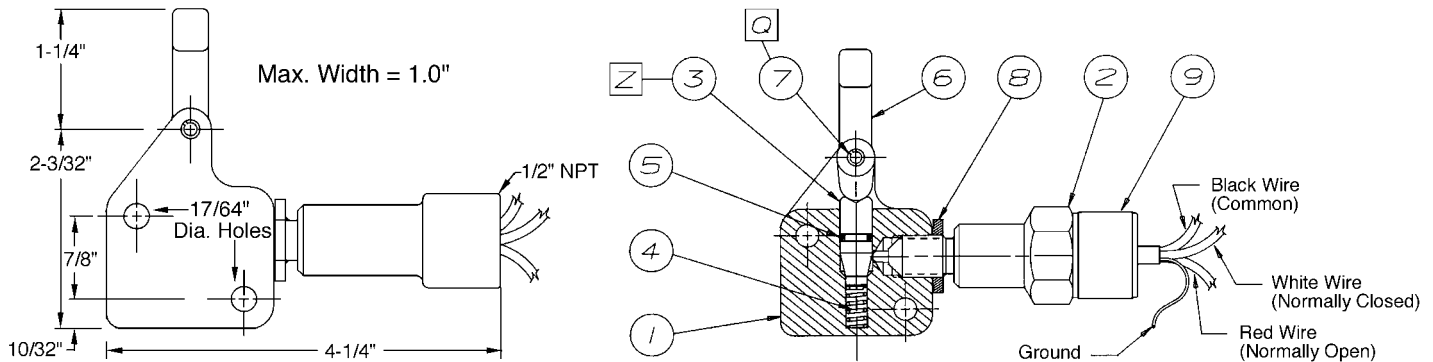
| Table A Strike Lever | | Table B Switch Contacts | |
|-------------------------|----------------|----------------------------|------------------|
| Code | Strike Lever | Code | Contact Material |
| 0 | Standard Width | 1 | Gold |
| 1 | Extended Width | 2 | Silver |

| Table C Electrical Connection & Wire Length | |
|--|----------------------------|
| Code | Connection, Wire Length |
| A | 1/2" FNPT, 18 inch |
| B | 1/2" FNPT, 15 ft. |
| C | 1/2" FNPT, 25 ft. |
| D | Non Metallic Hub*, 18 inch |
| E | Non Metallic Hub*, 15 ft. |
| F | Non Metallic Hub*, 25 ft. |

* Liquid Tight Hub with Buna N Seal
For use with General Purpose Switch Only

| Table D Wire Type | |
|----------------------|--|
| Code | Type |
| 0 | Shielded 4 Conductor 20 Gauge, Teflon™ Insulated, Teflon™ Jacket |

DIMENSIONS & CUT-AWAY VIEW



INSTALLATION

Mounting

Model 4395 can be mounted in any position. Mounting bracket may be required for most installations.

Checking

Check switch for operation by manually moving the trip lever between armed and unarmed positions while checking for continuity or alarm indication.

Wire Color Codes

Black Common
 Red Normally Open (N.O.)
 White Normally Closed (N.C.)
 Drain Wire Grounded to Switch Body
 All wiring should be in accordance with the governing electrical code(s).

AMOT USA

8824 Fallbrook Dr
 Houston, TX 77064
 Tel: +1 281 940-1800
 Fax: +1 281 668-8802

AMOT

Western Way
 Bury St. Edmunds IP33 3SZ
 Suffolk England
 Tel: +44 1284 762222
 Fax: +44 1284 760256

AMOT SINGAPORE

10 Eunos Road 8 # 12-06
 Singapore Post Centre
 Singapore 408600
 Tel: +65 6293 4320
 Fax: +65 6293 3307