



Kit No. 8210KIT2

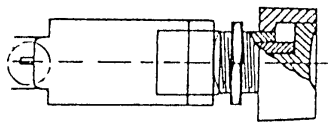


DIESEL RUNAWAY PROTECTION SYSTEMS

SPEEDTRAP™ 8210J Electronic Speedswitch Installation Kit

A.

11415
Push-Button
Switch



Mount in dash in easy to reach location. Requires 1/2" dia. mounting hole in dash. Mount the switch so the dash board is sandwiched between the nut (behind the dash) and the threaded ring (so ring is visible from the dash).

B.

9674L007
Dash Label



Affix to dash over Push-Button Switch 11415 by adhesive backing or with screws.

C.

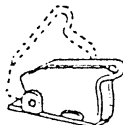
11453L001
Toggle Switch



Mount in dash in easy to reach location. Requires 1/2" dia. mounting hole in dash. Mount the switch so the dash board is sandwiched between the nut (behind the dash) and the threaded ring (so ring is visible from the dash).

D.

11456L001
Switch Guard



Mount over Toggle Switch 11435L001. Secure Switch Guard base between dash surface and switch mounting ring.

E.

9674L0009
Dash Label



Affix to dash over Toggle Switch 11453L001 and Switch Guard 11456L001 by adhesive backing or with screws.

F.

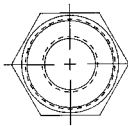
10747X001
Shielded Cable
Assembly

Connect two terminal end (the end with the rubber boot) of cable to Magnetic Pick-Up (AMOT 11408).

Connect 3 terminal end of cable to AMOT Speedtrap 8210J Electronic Speed Switch. Connect insulated leads to Terminals 3 and 4. Connect noninsulated lead to Terminal 2 (Ground).

G

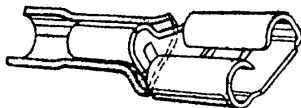
10811
Mag Pick-Up
Adaptor
Bushing



Adapter bushing can be used to provide additional mounting location for AMOT 11408 Magnetic Pick-Up if the engine's dedicated Magnetic Pick-Up holes are already in use. Adapter bushing is mounted in bottom drain hole of engine flywheel housing (1" NPT male thread). AMOT 11408 Magnetic Pick-Up is inserted in Adapter Bushing's 3/4-16 female thread.

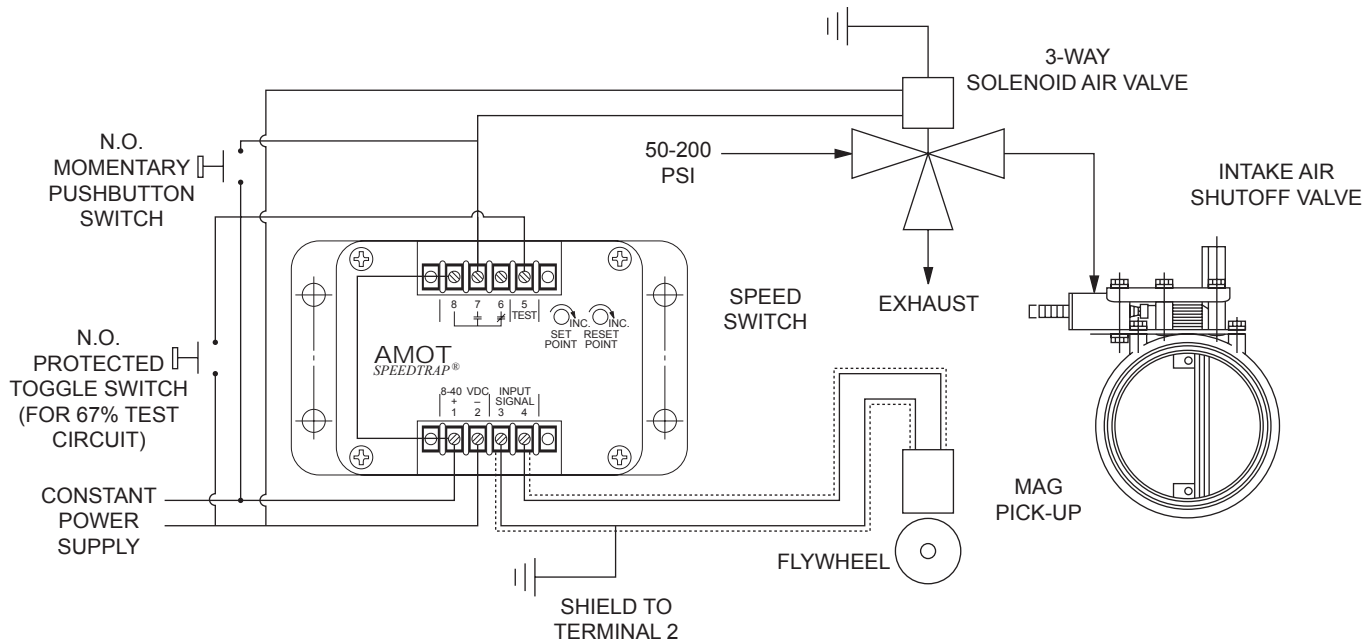
H

11416
Crimp
Connector



Crimp Connectors are for connections on Toggle Switch 11453L001 and Push-Button Switch 11415.

SAMPLE INSTALLATION DIAGRAM



AMOT USA

401 First Street
Richmond, CA 94801
Tel: +1 510 236-8300
Fax: +1 510 234-9950

AMOT

Western Way
Bury St. Edmunds IP33 3SZ
Suffolk England
Tel: +44 1284 762222
Fax: +44 1284 760256

AMOT SINGAPORE

10 Eunos Road 8 # 12-06
Singapore Post Centre
Singapore 408600
Tel: +65 6293 4320
Fax: +65 6293 3307