



Model 4087

Exhaust Gas Temperature Valve

Features

- RELIABLE PROTECTION
- LONG LIFE
- SENSES 300-1400°F
- VITON SEALS
- STAINLESS STEEL WELL
- MANUAL OR PNEUMATIC RESET
- EASE OF MAINTENANCE

HOW TO ORDER

When ordering please specify the following:

1. AMOT Model 4087B.
2. Temperature Range:
 - 300-1000°F
 - 1001-1400°F
3. Any of the following special features if required:
 - a. Gulfproofed (corrosion protection for seacoast atmospheres).
 - b. Pneumatic Reset (instead of manual reset).
 - c. *British Standard Tapered port threads (instead of NPT).
*Non-standard product, contact factory.

These valves may be ordered using the full description shown above or by constructing a Model No. using the Model Code System. The complete Model No. for a standard valve for 900°F service with NPT threads and manual reset is 4087B020



APPLICATION - a snap-acting valve actuated by increasing temperature on the well and intended for use principally as an exhaust gas temperature sensor.

2-WAY VALVE is closed in the operating or "satisfied" condition, and trips open when the set temperature is exceeded.

FOR TEMPERATURES from 300 to 1400°F in 2 ranges.

VITON O-RING SEALS are standard for high temperature resistance. The valve body is made of cast aluminum.

CORROSION RESISTANT stainless steel well is standard to withstand hot exhaust gases.

EASY TO MAINTAIN - valve body and rod may be easily removed from well for service without removing the well from the exhaust piping.

REMOTE RESET is available with the optional Pneumatic Reset which permits remote resetting of a valve which is mounted in a hot, inconvenient or inaccessible location.

SPECIFICATIONS

Maximum Pressure at IN Port	125 psi (860 kPa)
Maximum Pressure Outside Well ..	*1000 psi (6890 kPa)
Pneumatic Reset:	
Minimum Reset Pressure	40 psi (276 kPa)
Maximum Pressure	150 psi (1034 kPa)
Maximum Valve Body Temperature	400°F (200°C)
Valve Body & Spool	Aluminum
O-ring Seals	Viton
Well Material	347 Stainless Steel
Net Weight	2 lbs (0.9 kg)

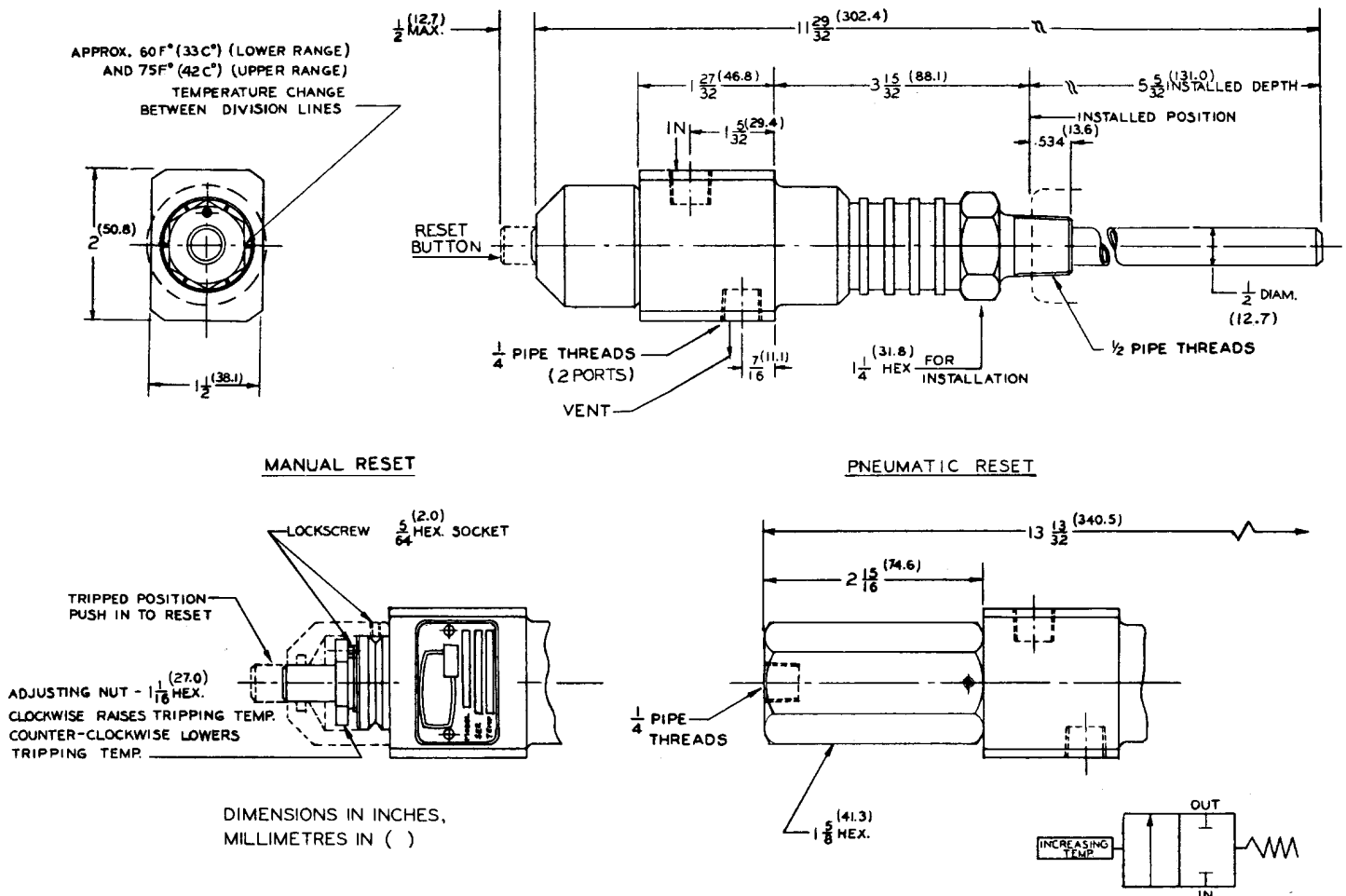
*Pressure shown is maximum allowable. To obtain working pressure, factors of safety should be applied as required by appropriate codes or regulations. In certain adverse conditions, a corrosion or erosion allowance should also be made.

OPERATION

Actuation of the valve is caused by increasing temperature expanding the stainless steel well at a rate faster than that of Rod (2). Pushrod (3) moves toward the well, permitting the two Balls (12) to slip into a groove between Upper Piston (10) and Trip Plunger (8). This releases the piston which is spring loaded by Main Spring (7). The piston moves upward permitting the middle O-ring seal to move past the IN Port, connecting IN to VENT.

Re-setting of the valve is accomplished by firmly depressing the top of Piston (10) after the well has been permitted to cool back down below the trip point.

DIMENSIONS



MAINTENANCE

AMOT Model 4087 Temperature Valves require practically no maintenance. Should any parts need to be replaced, the valve is easily disassembled by referring to the assembly drawing below. When servicing O-rings (11) or (29), lubricate lightly with the high temperature grease shown below. DO NOT FILL THE WELL WITH ANY TYPE OF HEAT TRANSFER COMPOUND.

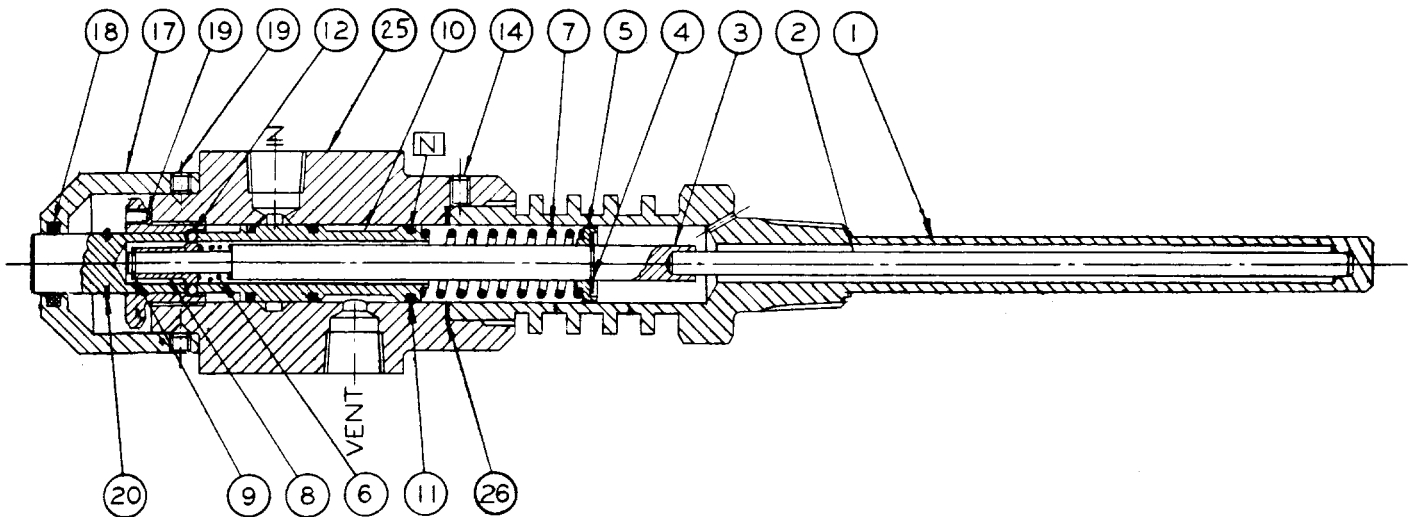
AMOT designs and tests all its products to ensure that high quality standards are met. For good product life, carefully follow AMOT's installation and maintenance instructions; failure to do so could result in damage to the equipment being protected or controlled.

When communicating with AMOT regarding operation of a control, always give the Model No. and Serial No. If ordering service parts, also include the Description, Part No., and quantity desired. If any parts are ordered by Reference No. only, please also include the Form No., Revision No., and date of this brochure.

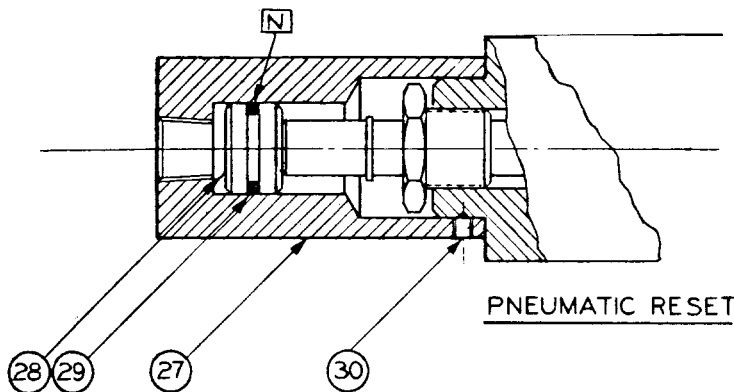
SERVICE PARTS

Ref. No.	Part no.	Qty.	Description
11	625	3	O-Ring, Viton
29	257L001	1	O-Ring, Viton
N	866L001	A/R	Grease, high temperature

This Parts List effective with Serial No. B631.



MANUAL RESET



AMOT USA
8824 Fallbrook Dr
Houston, TX 77064
Tel: +1 281 940-1800
Fax: +1 281 668-8802

AMOT
Western Way
Bury St. Edmunds IP33 3SZ
Suffolk England
Tel: +44 1284 762222
Fax: +44 1284 760256

AMOT SINGAPORE
10 Eunos Road 8 # 12-06
Singapore Post Centre
Singapore 408600
Tel: +65 6293 4320
Fax: +65 6293 3307