

# Exhaust Gas Temperature Valve

---

Model 4087

## Overview

This 2-Way valve is closed in the operating or "satisfied" condition, and trips open when the set temperature is exceeded.

## Typical applications

- For use principally as an exhaust gas temperature sensor

## Key features and benefits

- Reliable protection
- Long life
- Temperature ranges 150°C to 760°C (300°F to 1400°F)
- Viton seals
- Stainless steel well
- Manual or pneumatic reset
- Ease of maintenance



**Type 4087**  
**Exhaust Gas Temperature Valve**

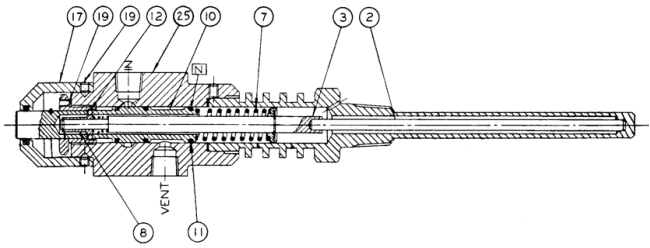


# Exhaust Gas Temperature Valve - Model 4087

## Operation

Actuation of the valve is caused by increasing temperature expanding the stainless steel well at a rate faster than that of Rod (2). Pushrod (3) moves toward the well, permitting

the two Balls (12) to slip into a groove between Upper Piston (10) and Trip Plunger (8). This releases the piston which is spring loaded by Main Spring (7). The piston moves upward permitting the middle O-ring seal to move past the IN Port, connecting IN to VENT. Re-setting of the valve is accomplished by firmly depressing the top of Piston (10) after the well has been permitted to cool back down below the trip point.



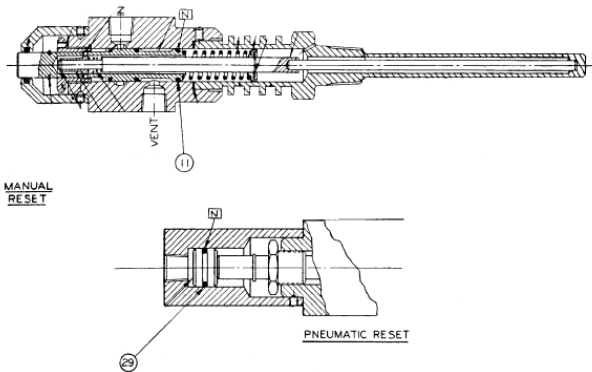
## Specification

<b>Maximum pressure at IN port</b>		8.6 bar	(125 psi)
Maximum pressure outside well		*68.9 bar	(*1000 psi)
<b>Pneumatic reset</b>	Minimum reset pressure	2.75 bar	(40 psi)
	Maximum pressure	10.3 bar	(150 psi)
<b>Maximum valve body temperature</b>		200°C	(400°F)
<b>Valve body &amp; spool</b>	Aluminum		
<b>O-ring seals</b>	Viton		
<b>Well material</b>	347 Stainless steel		
<b>Net weight</b>		0.9 kg	(2 lb)
<b>Shipping weight (appx.)</b>		3.0 kg	(6.5 lb)

\*Pressure shown is maximum allowable. To obtain working pressure, factors of safety should be applied as required by appropriate codes or regulations. In certain adverse conditions, a corrosion or erosion allowance should also be made.

# Exhaust Gas Temperature Valve - Model 4087

## Maintenance and service kits



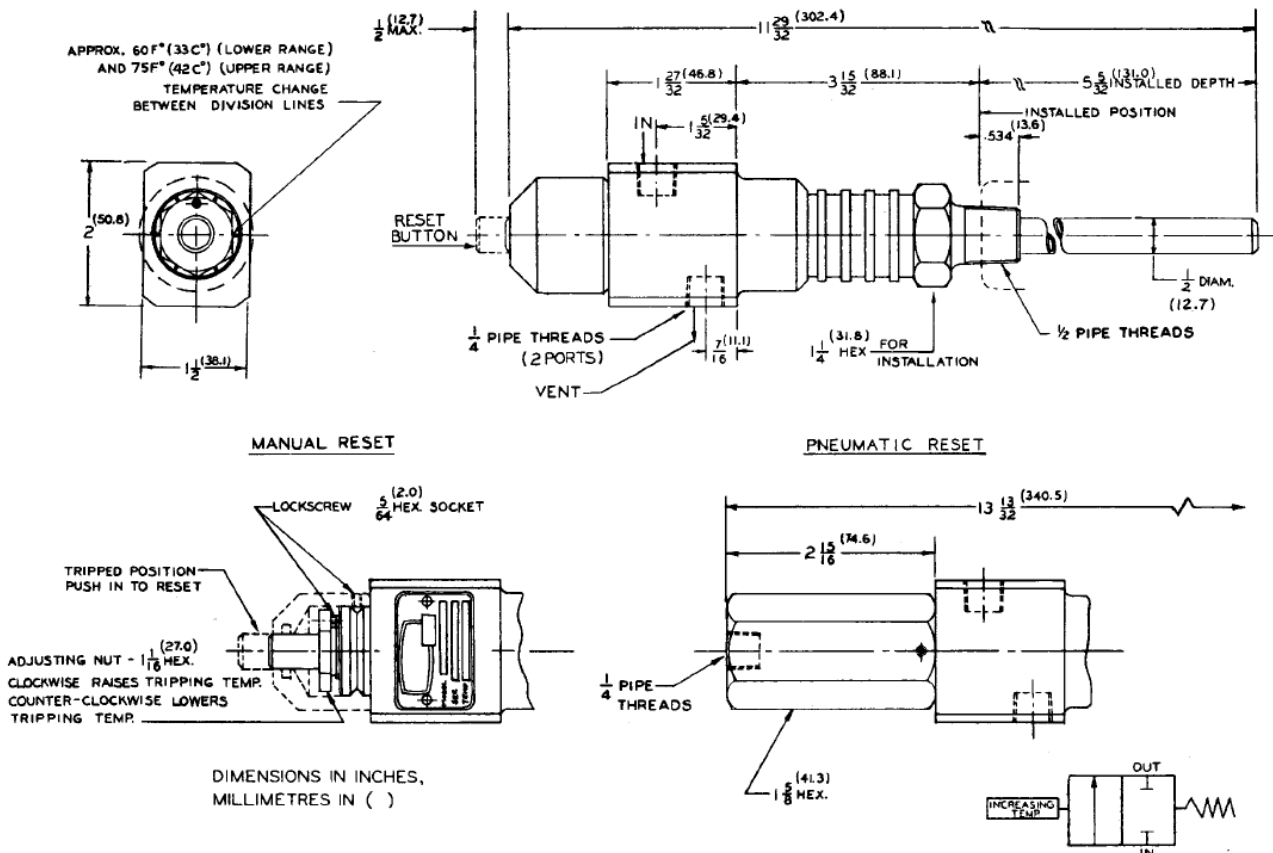
AMOT Model 4087 Temperature Valves require practically no maintenance. Should any parts need to be replaced, the valve is easily disassembled by referring to the assembly drawing below. When servicing O-rings (11) or (29), lubricate lightly with the high temperature grease shown below. DO NOT FILL THE WELL WITH ANY TYPE OF HEAT TRANSFER COMPOUND.

AMOT designs and tests all its products to ensure that high quality standards are met. For good product life, carefully follow AMOT's installation and maintenance instructions; failure to do so could result in damage to the equipment being protected or controlled. When communicating with AMOT regarding operation of a control, always give the Model No. and Serial No. If ordering service parts, also include the Description, Part No., and quantity desired. If any parts are ordered by reference number only, please also include the datasheet reference at the bottom of this brochure.

### Service kits

Ref no.	Part no.	Qty	Description
11	625	3	O-ring, Viton
29	257L001	1	O-ring, Viton
N	866L001	A/R	Grease, high temperature

## Dimensions



# Exhaust Gas Temperature Valve - Model 4087

## How to order

Use the table below to select the unique specification of your 4087 Exhaust Gas Temperature Valve:

<b>Example</b>	4087B		1	-AA	<b>Comments</b>		
					<b>Body material</b>		
<b>Basic Model</b>	4087B				Aluminum body		
					<b>Thread</b>	<b>Finish</b>	<b>Temp. Range</b>
<b>Threads Finish and Temperature Range</b>	02				NPT	Gulfproofed	150 to 540°C (300 to 1000°F)
	06				NPT	Gulfproofed	540 to 760°C (1001 to 1400°F)
					<b>Reset type</b>		
<b>Reset</b>	0				Manual		
	1				Pneumatic		
<b>Special Requirements</b>				-AA	Standard		
				-**	Special Requirements		

## Americas

---

AMOT USA  
8824 Fallbrook Dr  
Houston  
TX 77064  
USA

Tel: +1 (281) 940 1800  
Fax +1 (713) 559 9419  
Email sales@amotusa.com

## Asia and Australasia

---

AMOT Shanghai  
Rm 4102 - 4104 United Plaza  
1468 Nanjing Road West  
Shanghai 200040  
China

Tel +86 (0) 21 6279 7700  
Fax +86 (0) 21 5237 8560  
Email shanghai@amot.com

AMOT Singapore  
10 Eunos Road 8 #12-06  
Singapore Post Centre  
Singapore 408600

Tel +65 6408 6265  
Fax +65 6293 3307  
Email singapore@amot.com

## Europe and Africa

---

AMOT  
Western Way  
Bury St Edmunds  
Suffolk, IP33 3SZ  
United Kingdom

Tel +44 (0) 1284 762222  
Fax +44 (0) 1284 760256  
Email info@amot.com

AMOT Controls GmbH  
Rondenbarg 25  
22525 Hamburg  
Germany

Tel +49 (0) 40 8537 1298  
Fax +49 (0) 40 8537 1331  
Email germany@amot.com