

Crankcase Pressure Sensing Valve

Model 4126

Overview

AMOT Model 4126 detects the minor pressure surge that usually precedes a major crankcase explosion. It will detect the smallest pressure buildup caused by worn packing or by excessive blow-by caused by a piston and liner just beginning to scuff. This high sensitivity provides instant warning or shutdown before major damage occurs as the unit will not reset itself automatically.

Typical applications

- This model is a 2-Way valve for use primarily with AMOT Safety Control Systems

Key features and benefits

- Suitable for air, gas, or oil systems
- Adjustable range of 0.017 – 0.034 bar (0.25 - 0.50 psi)
- Higher range is available with use of auxiliary spring



Type 4126
Crankcase Pressure Sensing Valve



Crankcase Pressure Sensing Valve - Model 4126

Specification

Body material	Cast aluminum	
Internal parts	Plated steel and stainless steel	
Valve seals	Nitrile/Buna N	
Diaphragm material	Nitrile/Buna N	
Maximum sensed pressure (proof)	2.1 bar	(30 psi)
Maximum valve pressure (port A)	8.6 bar	(125 psi)
Net weight	1.7 kg	(3.75 lb)
Shipped weight (appx.)	2.3 kg	(5 lb)

Pressure ranges

Standard range	0.017 - 0.034 bar	0.25 - 0.50 psi
With auxiliary spring	0.034 - 0.069 bar	0.50 - 1.0 psi

Auxiliary spring is furnished loose with each unit

Installation factors

The Pressure Sensing Port has a 2.54cm (1in.) female pipe tap. It is suggested that the unit be supported by means of a 2.54cm (1in.) pipe nipple from the engine crankcase door or frame. Install with the drain hole down and the pipe back to crankcase so any oil which collects in the diaphragm chamber will drain off. If the unit is

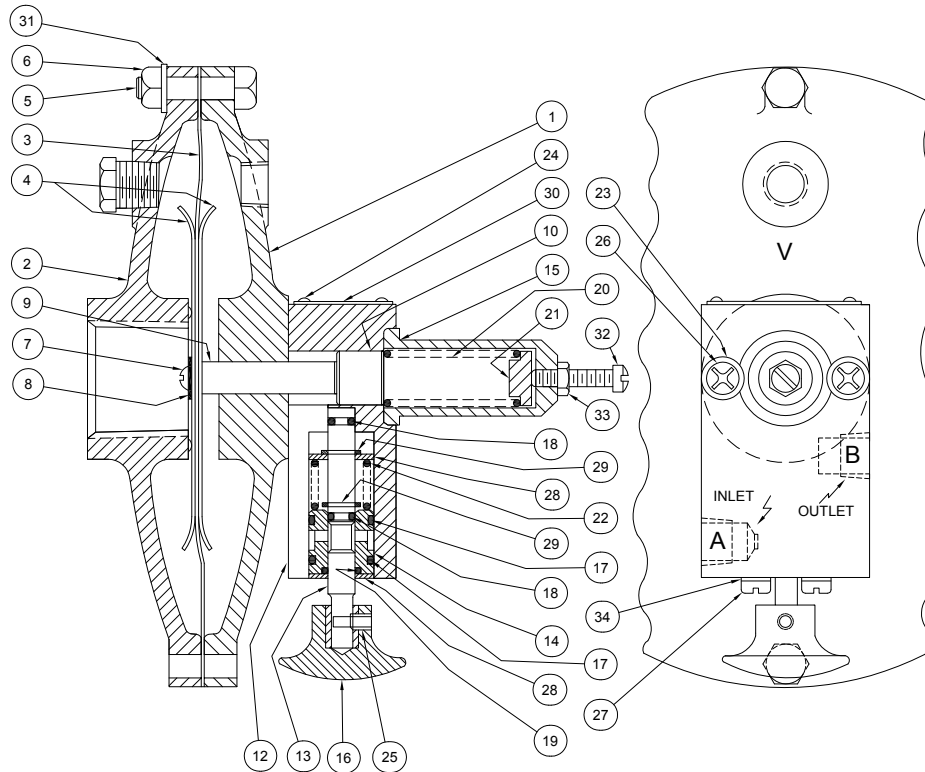
supported horizontally by a nipple and elbow with the pressure sensing port pointing down, plug the drain hole because excess oil will drain back down the supporting pipe. The control system pressure is connected to valve inlet port "A". When the unit trips, port "B" will vent. The unit is reset after tripping by pulling the Reset Knob.

How to order

Order this model simply by its model number – Model 4126A and specify whether seals are to be Buna N/Nitrile or Viton. Since it is shipped unset, it is not necessary to furnish any pressure setting with the order.

Crankcase Pressure Sensing Valve - Model 4126

Service kits



Ref no.	Qty	Description
1	1	Body assembly
2	1	Diaphragm cover
3	1	Diaphragm cover
4	2	Diaphragm plate
5	6	Capscrew
6		Nut
7	1	Machine screw
8	1	Thread seal
9	1	Pushrod
10	1	Piston
12	1	Body
13	1	Stern
14	1	Spool
15	1	Spring housing
16	1	Knob
17	1	O-ring
18	2	O-ring

Ref no.	Qty	Description
19	1	O-ring
20	see table	Main spring
21	1	Adjustment spring guid
22	1	Return spring
23	2	Washer
24	7	Drive screw
25	1	Set screw
26	2	Machine screw
27	2	Machine screw
28	2	Washer (special)
29	2	Retaining ring
30	1	Nameplate
31	6	Lockwasher
32	1	Adjusting screw 491L002
33	1	Lock nut (for adj. screw)
34	2	Lockwasher

Compression Spring

Qty	Part No.	Pressure range	Remarks
1	6612L030	0.25 to 0.5 psi	Light - installed, Heavy - shipped loose
2	6612L023	0.5 to 1.0 psi	Wire to valve

Americas

AMOT USA
8824 Fallbrook Dr
Houston
TX 77064
USA

Tel: +1 (281) 940 1800
Fax +1 (713) 559 9419
Email sales@amotusa.com

Asia and Australasia

AMOT Shanghai
Rm 4102 - 4104 United Plaza
1468 Nanjing Road West
Shanghai 200040
China

Tel +86 (0) 21 6279 7700
Fax +86 (0) 21 5237 8560
Email shanghai@amot.com

AMOT Singapore
10 Eunos Road 8 #12-06
Singapore Post Centre
Singapore 408600

Tel +65 6408 6265
Fax +65 6293 3307
Email singapore@amot.com

Europe and Africa

AMOT
Western Way
Bury St Edmunds
Suffolk, IP33 3SZ
United Kingdom

Tel +44 (0) 1284 762222
Fax +44 (0) 1284 760256
Email info@amot.com

AMOT Controls GmbH
Rondenbarg 25
22525 Hamburg
Germany

Tel +49 (0) 40 8537 1298
Fax +49 (0) 40 8537 1331
Email germany@amot.com

AMOT Russia
#34 Shabolovka Street
Building 2
Moscow 115419
Russia

Tel: +7 495 617 12 93
Fax: +7 495 913 97 65