

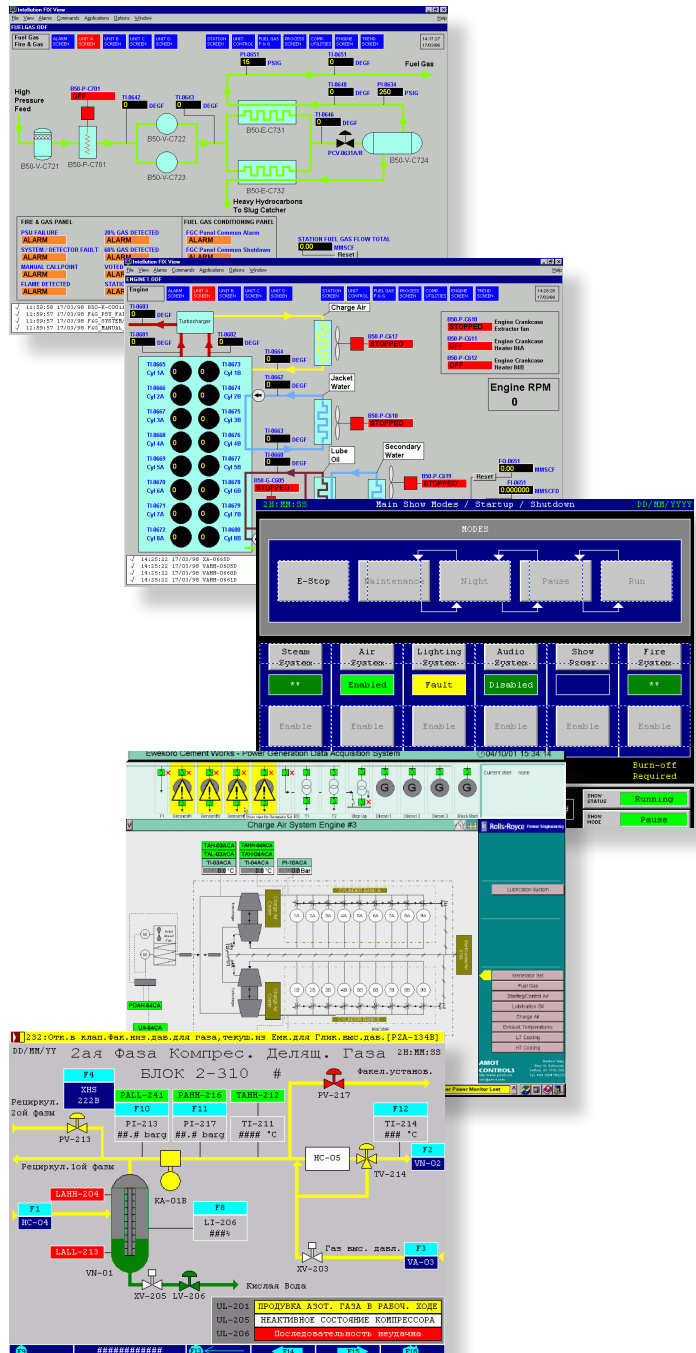
SCADA/Data Logging

Typical Applications

- Control and monitoring of:
 - Generator stations
 - Conveyor systems
 - Gas compressors
 - Pump stations
 - Process plant

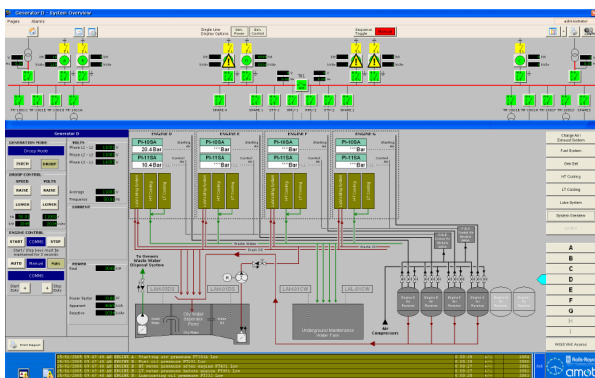
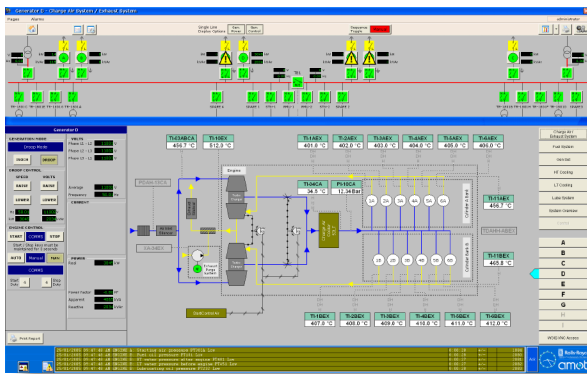
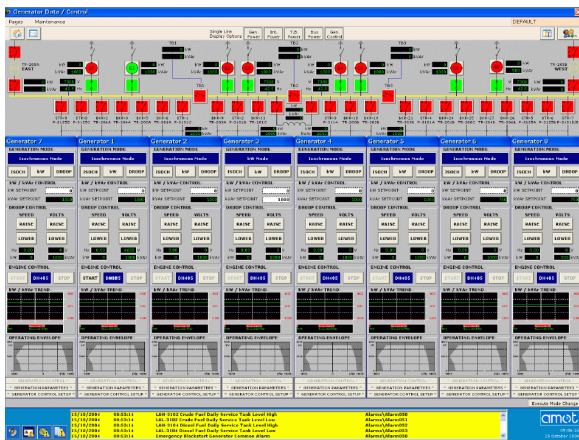
Typical Features

- Machine and plant live monitoring
- Operator to plant interface and control
- Plant visualisation
- Alarm and shutdown logging
- Tag logging
- Historical trends and reports



SCADA/Data Logging

Overview



SCADA - Supervisory Control and Data Acquisition - is the ultimate operator interface. Based on an industrial or standard desktop personal computer, the heart of the system is a specific software package, which runs under various operating systems.

The AMOT solution offers an intuitive user interface to suit your process operational requirements.

In addition to providing 100% data integrity, it also delivers:

- Real time and historical trending, allowing the display of real time or historical data in graphical form with time and date stamping.
- Alarm management, allowing alarms to be sent to display screens, printers and files.
- Reporting, allowing customised reports for management to be produced containing real process information.
- Security: users can be assigned both individual and group rights; an audit trail lets you track and record operator actions.
- Communications to plant equipment via Ethernet, RS485, wireless via standard industrial protocols required.
- Relational database support; share data with databases using ODBC.
- Business system communication, using Ethernet and TCP/IP and a multitude of protocols.
- The system allows for multiple SCADA nodes to be installed throughout the plant.

Experience

WinCC
RSView
Wonderware
InTouch
Citect
iFix
Factory Talk SE

AMOT has experience in many software packages and across many industries from industrial automation, show control through to machine and plant monitoring for the oil and gas industries.

The SCADA is the operator's window into the process of the plant. The hardware associated with the package allows the software to be developed fully by:

- Process visualisation
- Date and time sequencing
- Historical reporting
- Chart generation
- Alarm listing
- Fault diagnosis
- Preventative maintenance scheme

Installations



- Plant monitoring for a gas compression site (Nigeria)
- Plant fire and gas monitoring system (Venezuela)
- Gas dehydration facility (Angola)
- Multi compressor plant (Libya)
- Generating plant for cement works (Nigeria)
- Rolling road for lawn mower production (UK)
- Water injection pump system, FPSO (Indonesia)
- Show control for a multi-national entertainment company (France)
- Plant monitoring and control on PMS cracker (Kingdom of Saudi Arabia)

Europe, Middle East and Africa

AMOT
Western Way
Bury St Edmunds
Suffolk, IP33 3SZ
United Kingdom

Tel +44 (0) 1284 762222
Fax +44 (0) 1284 755178
Email info@amot.com

AMOT Controls GmbH
Rondenbarg 25
22525 Hamburg
Germany

Tel +49 (0) 40 8537 1298
Fax +49 (0) 40 8537 1331
Email germany@amot.com

AMOT Russia
#34 Shabolovka Street
Building 2
Moscow 115419
Russia

Tel +7 495 617 12 93
Fax +7 495 913 97 65
Email russia@amot.com

Asia and Australasia

AMOT Shanghai
Rm 4102 - 4104 United Plaza
1468 Nanjing Road West
Shanghai 200040
China

Tel +86 (0) 21 6279 7700
Fax +86 (0) 21 5237 8560
Email shanghai@amot.com

AMOT Singapore
10 Eunos Road 8 #12-06
Singapore Post Centre
Singapore 408600

Tel +65 6408 6265
Fax +65 6293 3307
Email singapore@amot.com

Americas

AMOT USA
8824 Fallbrook Dr
Houston, TX 77064
USA

Tel +1 (281) 940 1800
Fax +1 (713) 559 9419
Email general: sales@amotusa.com
orders: orders@amotusa.com
customer service: cs@amotusa.com

For control systems enquiries contact:
systems@amot.com

www.amot.com

