

3-Way Solenoid Air Valve

Model 10424X

Overview

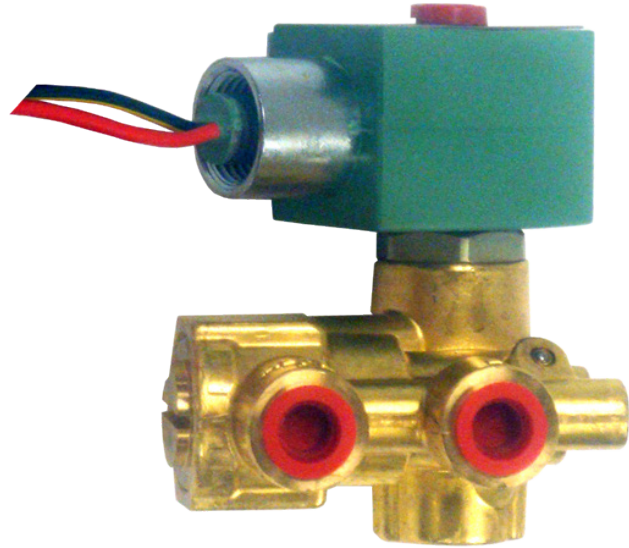
Model 10424X is used to link the truck's air supply and the SPEEDTRAP™ air intake shut-off valve in applications where the truck may encounter off-road services or extreme vibration.

Typical applications

- Tank trucks
- Vacuum trucks
- Oil field trucks and equipment
- Offshore engines
- Trenchers
- Drilling rigs
- Oil skimmer barges
- Aircraft ground equipment

Key features and benefits

- Compact rugged design
- NEMA 4 Watertight
- CSA certified
- UL listed



Model 10424X
3-Way Solenoid Air Valve

3-Way Solenoid Air Valve - Model 10424X

Operation

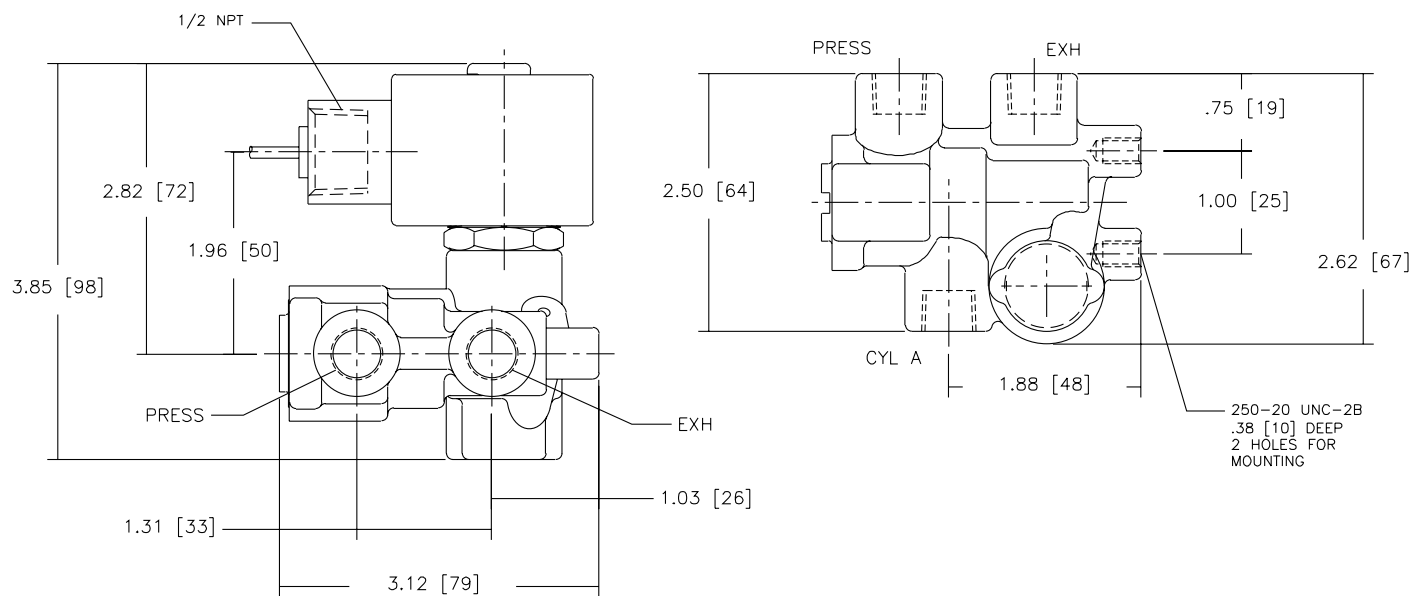
Pressure will be sent through Port "P" to Port "A" which will close SPEEDTRAP™ model 4261 intake

air shut-off valve. When de-energized, pressure will be vented through Port "A" to Port "E".

Specification

Power supply:	10.2 - 12.6 VDC	
Pressure requirements:	3.5 to 13.8 bar	50 to 200 psi
Temperature:	-18° to 49°C	0° - 120°F
Response time:	5.10 milliseconds	
Valve body:	Brass	
Valve seals:	Buna N (Nitrile)	
Valve piston:	303 SS	
Pressure connections:	1/4" NPT	
Mounting threads:	1/4" - 2" x 3/8" deep	
Approvals:	CSA and UL listed	

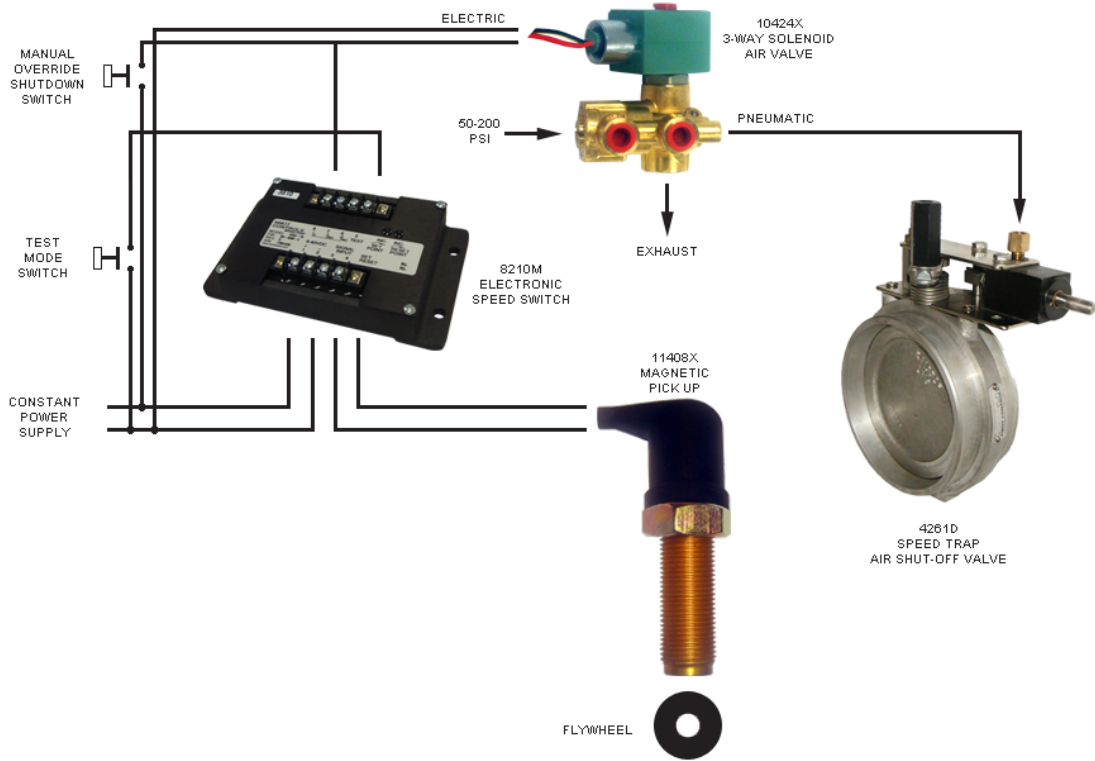
Dimensions



3-Way Solenoid Air Valve - Model 10424X

Typical application

Electro/Pneumatic Automatic System (Manual Pneumatic)



How to order

To order Model 10424X specify AMOT SPEEDTRAP™ 10424X (includes mounting bracket).

Americas

AMOT USA
8824 Fallbrook Dr
Houston, TX 77064
USA

Tel +1 (281) 940 1800
Fax +1 (713) 559 9419
Email customer.service@amot.com

Asia Pacific

AMOT Shanghai
Bd. 7A, No. 568, Longpan Rd., Malu Jiading
Shanghai 201801
China

Tel: +86 21 5910 4052
Fax: +86 21 5237 8560
Email: shanghai@amot.com

Europe, Middle East and Africa

AMOT UK
Western Way
Bury St Edmunds
Suffolk, IP33 3SZ
England

Tel +44 (0) 1284 715739
Fax +44 (0) 1284 760256
Email info@amot.com

AMOT Controls GmbH
Rondenbarg 25
22525 Hamburg
Germany

Tel +49 (0) 40 8537 1298
Fax +49 (0) 40 8537 1331
Email germany@amot.com